

Your new Retail Make-Up career starts here.....

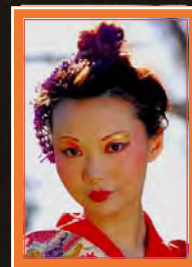


ACCREDITED MAKE-UP COURSE

Start your career as a Make-Up Artist by completing the Certificate II in Retail Make-Up and Skin Care (SIB20110).

Make-Up Artists work in beauty salons, in the media, in department stores, as cosmetic retailers, freelancing, in photographic studios and also in the diverse retail sector.

With over 150 beauty and hair salons and cosmetic retailers in South Australia and with over 100,000 people employed in retail there are excellent opportunities for employment.



You Will Learn:

- Designing & applying make-up
- Make-up for photography
- Wedding make-up
- The latest techniques
- Working in retail
- Customer service
- Essential retail skills
- Poise and confidence



EXCELLENCE IN EDUCATION & TRAINING

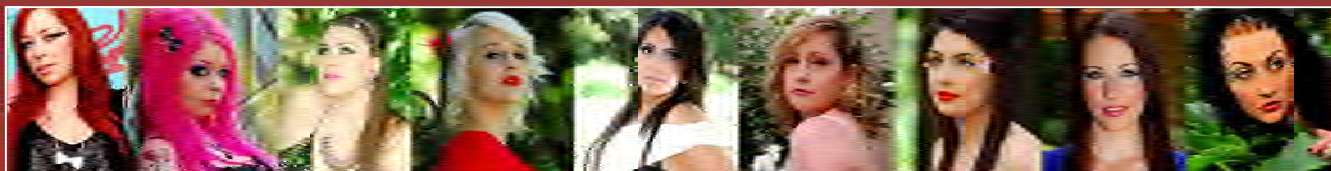
Level 7 East Wing, 50 Grenfell St, Adelaide SA 5000
Post: PO Box 3485, Rundle Mall PO, SA 5000

TO ENROL Ph: 8410 8938

study@culturalimmersion.sa.edu.au

www.eet-learning.com.au

CERTIFICATE II IN RETAIL MAKE-UP AND SKINCARE



COURSE INFORMATION

The Certificate II in Retail Make-Up and Skin Care (SIB20110) consists of 10 core and 5 elective units. This course can be accessed by anyone over the age of 16 years that has completed Year 10.



CORE UNITS	Course Code
Demonstrate retail skin care products	SIBBFAS201A
Conduct financial transactions	SIBXCCS201A
Organise and maintain work areas	SIRXCLM001A
Communicate in the workplace	SIRXCOM001A
Design and apply make-up	SIBXFAS201A
Work effectively in a retail environment	SIRXIND001A
Merchandise products	SIRXMER001A
Apply safe working practices	SIRXOHS001A
Recommend hair, beauty and cosmetic products and services	SIRXRPK002A
Sell products and services	SIRXSLS001A
ELECTIVE UNITS	Course Code
Provide service to clients	SIBXCCS202A
Design and apply make-up for photography	SIBXFAS202A
Create a display	SIRXMER005A
Monitor in-store visual merchandising display	SIRXMER003A
Research and apply beauty industry information	SIBBRES201A

For more information on the Beauty industry visit
http://www.serviceskills.com.au/sites/default/files/JobLove_WEB_1.pdf

Further Study

Speciality Make-Up for the stage, film and media; Beauty Therapy; Hairdressing.

Tuition and Resource Fees

Tuition Fees: contact us
 Make-up Kit: \$ 650 (students keep this kit as their own)
 Photo Shoot: \$ 90

TOTAL COST: contact us

Instalment payment plans available

FEES FOR JSA, DES PROVIDERS & AGENCIES

Discounts exist for referrals of 10 or more clients.

Recognition of Prior Learning (RPL) Fee

(This fee is only applicable to applicants undertaking RPL)

RPL Fee: \$ 145 per unit

About the Course

The nationally accredited Certificate II in Retail Make-Up and Skin Care is fun, interactive and includes hands-on and practical sessions. The course also includes essential retail skills and concludes with a photo shoot with a professional photographer. These photos can be used in your industry portfolio which you can show off to potential employers!

Important Information

- Students must **a)** attend work placements and **b)** arrange to bring in models as required.
- You will be expected to complete workbooks and will be expected to undertake research.
- Applicants will be interviewed to determine training needs. You may be required to undertake a literacy assessment in order to demonstrate competency at the required level.
- This course requires effective language, communication, and interpersonal skills to work with customers and others. You should be able to read and understand a range of simple texts and write a range of short answers. You should be able to complete straightforward calculations either manually and / or using a calculator. If you need assistance we can offer you language, literacy, and numeracy assistance beyond the course hours for an additional fee.
- If you already have make-up or retail skills you can apply for Recognition of Prior Learning (RPL). If you achieve RPL for any unit then you will not have to re-do it. Contact Maria for RPL.

Career Pathways

Freelancer; Retail Make-up consultant, Cosmetic consultant; Make-Up Artist in Photographic Studio; Make-Up Artist for film or media.

Course Times and Duration

Start Date: available throughout 2012.

Two days per week over 17 weeks (20 nominal hours per week)

Course days are:

9.00am to 3.30pm two days per week.

Course times are subject to change.

Minimum class size applies.

Excellence in Education & Training
 is proud to be a member of:



EXCELLENCE IN EDUCATION & TRAINING

Level 7 East Wing, 50 Grenfell St, Adelaide SA 5000

Post: PO Box 3485, Rundle Mall PO, SA 5000

TO ENROL Ph: 8410 8938

study@culturalimmersion.sa.edu.au

www.eet-learning.com.au