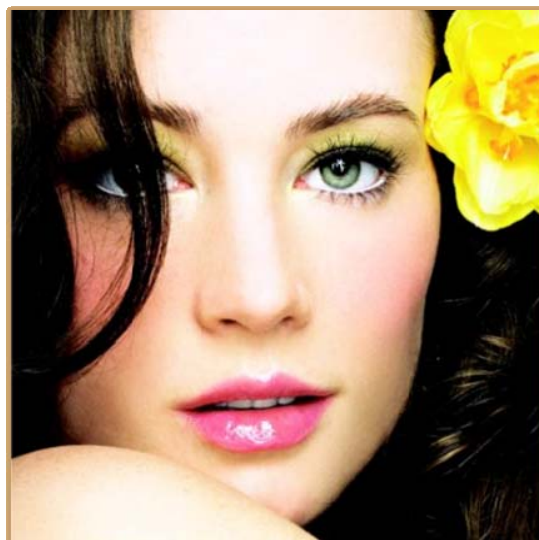


Fashion & Photography Make-up

Based upon Certificate II in Make-up Services (WRB20204)

Make up your mind!



There's more than what meets the eye!



www.culturalimmersion.sa.edu.au



RTO No. 40314 CRICOS Provider

Cultural Immersion
is a member of:
AARTO & ACPET



WELCOME FROM THE DIRECTOR OF STUDIES & INTERNATIONALISM



Welcome to Cultural Immersion. Whether you are currently at school, or have left school, are in the workforce, or seeking work, at Cultural Immersion you will experience quality training and educational programs that can fulfil your employment and personal goals. Education enhances your life and leads to great opportunities!

Cultural Immersion offers quality and accredited training, English Proficiency courses, English Tuition programs and Study Tours to local and international students. Our approach is genuine and our aim is to maximise your potential, performance, character and inner confidence.

All certificate courses are nationally accredited under the AQF Framework and are conducted by qualified trainers in spacious and comfortable classrooms. All non-Award English courses and English Tuition classes are conducted by qualified ESL teachers and tutors.

Adelaide is a wonderful and safe place to study and Adelaide's reputation for quality education is known throughout the world. Our learning centre is in the heart of Adelaide's CBD, accessible by all forms of public transport and is just a short 2 minute walk to Rundle Mall, Adelaide's main shopping, cafe and entertainment precinct.

This course guide will assist you with your orientation to Cultural Immersion and the course you intend to study. The information in this course guide must be read with the current **Student Handbook** as both booklets provide details about pre-enrolment, the enrolment process, regulations that you must know, campus and study guidelines and other key issues around studying at and attending Cultural Immersion.

For more information on what we can offer you please contact us on **(08) 8410 8938** (+61 8 84108938 for international callers) or visit our website at **www.culturalimmersion.sa.edu.au**. All of our fact sheets, course guides, the current Student Handbook, enrolment forms and other forms can also be downloaded from our website.

I welcome you to Cultural Immersion. I am sure you will have a rewarding and enjoyable learning experience.

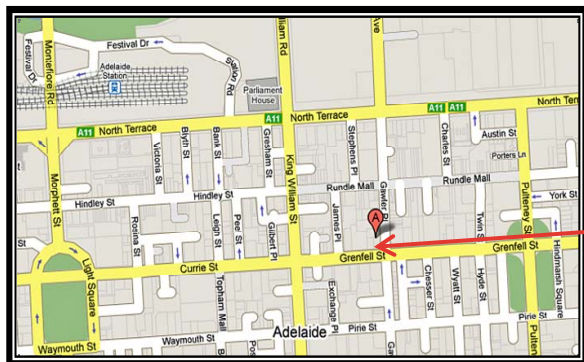
M La Pietra

Maria La Pietra
Director of Studies & Internationalism

OUR LOCATION

Cultural Immersion is conveniently located at **Level 7 East Wing, 50 Grenfell Street, Adelaide, South Australia.**

Adelaide CBD



Our education centre is in the heart of Adelaide's CBD, only 2 minutes walk from Rundle Mall, Adelaide's main retail and entertainment precinct.

We are also only 5 minutes walk from the South Australian State Library, 10 minutes walk from Adelaide's universities and a few minutes walk from all public transport.

Before 5.30pm access is via the front entrance at 50 Grenfell Street. East Wing lifts to Level 7 are to the right.



Disabled access is via the main entrance on the ground floor. Disabled toilets are located on the ground floor to the right of the East Wing elevators.



AFTER HOURS ACCESS

For classes after 5.30pm Mondays to Fridays or on Saturdays access is by the side entrance which is by glass door on 71 Gawler Place *between 'Priceline Pharmacy' and the gift shop.* A Cultural Immersion staff member will open the doors for you.

Please do not be late for your class as the doors will be closed 10 minutes after classes start.



Cultural Immersion
Level 7 East Wing, 50 Grenfell Street, Adelaide, South Australia, AUSTRALIA
Ph/Fax: (61 8) 8410 8938 Post: PO Box 3485, Rundle Mall, SA, 5000, AUSTRALIA
study@culturalimmersion.sa.edu.au www.culturalimmersion.sa.edu.au

Revision 4.1
June 2009. To be reviewed July 1 2009
Responsibility: Director of Studies & Internationalism

MISSION STATEMENT

To provide quality training, English courses, English Tuition & Study Tours to Australian and international students.
To be recognised as a provider of quality educational and training packages that are life-enhancing to our students.

OUR CORE STAFF

Maria La Pietra

BSSc. Dip TESOL. TAA. JP.
Director of Studies & Internationalism
Email: maria@culturalimmersion.sa.edu.au

Rosie Stavrou

TAA
Floristry Co-ordinator & Trainer
Email: rosie@culturalimmersion.sa.edu.au

Darren Hosne

BA Psych. ACert. Mgt. WTA.
Business & Strategic Manager
Email: darren@culturalimmersion.sa.edu.au

Steve Stavrou

Business Operations Assistant
Email: study@culturalimmersion.sa.edu.au

Kathleen Gillespie

Personal Assistant. Homestay Co-ordinator. Registrar
Email: study@culturalimmersion.sa.edu.au

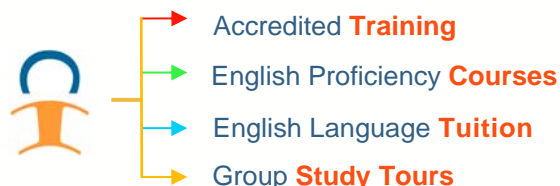
TRAINERS, TEACHERS, ASSISTANTS AND RESOURCES

Trainers, teachers and assistants at Cultural Immersion are selected specifically for their expertise in the delivery of training in their areas of technical knowledge and experience, and will generally have a qualification of an equivalent or higher level relevant to the unit of competency taught. Trainers must also have a high standard of communication skills, (interpersonal, oral & written) and personal presentation appropriate to the standards set by the industry. This includes the ability to assess the previously acquired competencies of students for the purposes of RPL.

We use industry specific training resources. Lauren Hagger our highly qualified make-up services trainer is enthusiastic and her energy is infectious. Her skills in make-up are exceptional and will benefit all students seeking to enter the exciting world of make-up and beauty.

WHAT WE CAN OFFER YOU

Our Range of Education and Training services



Nationally Accredited Certificates

- 40495SA: Certificate IV in English Proficiency
- SIR20207: Certificate II in Retail
- SIR30207: Certificate III in Retail
- WRB20204: Certificate II in Make-Up Services
- WRF20104: Certificate II in Floristry



Cultural Immersion offers a wide range of services to Australian and international students. We work closely with a number of educational agents, South Australian schools and international schools to develop & provide high level programs for our students.

OUR KEY & VALUED COLLABORATIONS AND NETWORKS

Cultural Immersion thanks the following organisations for their guidance, mentoring, networking and support. We develop networking and professional collaborations with quality organisations and education agents to provide the highest standards of service to our students.



Australian International Education Services
澳大利亚国际教育服务中心

www.aies.biz



www.badaedu.com



www.olsh.sa.edu.au



Cultural Immersion

Level 7 East Wing, 50 Grenfell Street, Adelaide, South Australia, AUSTRALIA
Ph/Fax: (61 8) 8410 8938 Post: PO Box 3485, Rundle Mall, SA, 5000, AUSTRALIA
study@culturalimmersion.sa.edu.au www.culturalimmersion.sa.edu.au

PRE-ENROLMENT INFORMATION

The 'Student Handbook' and the appropriate 'Course Guide' should be read by all potential students prior to their official enrolment at Cultural Immersion. Students are also required to read the information on ESOS and the TAS (Tuition Assurance Scheme) on the following websites:

https://aei.dest.gov.au/AEI/ESOS/NationalCodeOfPractice2007/NC_Part_D_Intro.htm#Standard1

http://aei.dest.gov.au/aei/esos/tuition_assurance_scheme.htm

They are designed to protect students and the Australian International Education Industry in general from misuse.

This document contains an overview of the ESOS Framework and **must be read by international students**:

http://aei.dest.gov.au/AEI/ESOS/QuickInfo/ESOS_FrameWork_pdf.pdf

Please type the addresses to these websites into your browser's address bar if these [links](#) do not work.

If you cannot access this information over the internet please contact our office and we will send you alternate links and contacts to acquire this information.

INTERNATIONAL STUDENTS PLEASE NOTE: that your personal information may be shared between Cultural Immersion and the Australian Government and designated authorities and, if relevant, the Tuition Assurance Scheme and the ESOS Assurance Fund Manager. This information includes personal and contact details, course enrolment details and changes, and the circumstance of any suspected breach by the student of a student visa condition. Student's personal information may also be exposed to DETA for audit purposes.

International students please note that all of our courses/certificates have an IELTS (or equivalent) requirement.

All students will be required to read and abide by the pre-enrolment conditions on the Course Application Form.

ENROLMENT PROCESS: Australian and International Students

All students are required to complete all relevant forms as detailed below. Please note that confirmation of enrolment (CoE) will only occur after we process the information you send us and after your payment clears.

Steps Towards Enrolment:

STEP 1: Please read and understand pre-enrolment information in the **Student Handbook** and in the appropriate **Course Guide**.
Read and understand all conditions and tasks detailed in the **Course Application Form**.

STEP 2: Complete the appropriate **Course Application Form** *and* the **Payment Sheet**.
Note: Students applying for RPL must complete the relevant Course Application Form.

STEP 3: Send the completed **Course Application Form** and **Payment Sheet** to Cultural Immersion by the due date. If any details are not filled out correctly we will notify you to correct & re-submit the form by the due date.

STEP 4: After your application is assessed and approved and after your payment clears you will receive:
i) **Confirmation of Enrolment** letter to confirm your enrolment and course details.
ii) **Course Acceptance Form**.
iii) **Invoice** as a record of your payment.

STEP 5: Please complete the **Course Acceptance Form** and post to us **within 5 days**.

STEP 6: We will then process your Course Acceptance Form to **finalise your enrolment**.

STEP 7: Lastly, we will post your student number, timetables, other course information and any RPL material (if applicable) to you.

All forms and guides are available for download from www.culturalimmersion.sa.edu.au



Cultural Immersion

Level 7 East Wing, 50 Grenfell Street, Adelaide, South Australia, AUSTRALIA
Ph/Fax: (61 8) 8410 8938 Post: PO Box 3485, Rundle Mall, SA, 5000, AUSTRALIA
study@culturalimmersion.sa.edu.au www.culturalimmersion.sa.edu.au

REFUND POLICY

ALL COURSE FEES MUST BE PAID IN FULL BEFORE REFUNDS ARE ISSUED

1. If, for any reason, Cultural Immersion is unable to deliver the course for which the student has enrolled a full refund of the tuition and resource fees will apply.
2. If a course is cancelled by Cultural Immersion after it has started you will only pay for the units/modules you have attended thereby receiving a partial refund.
3. If fees have been paid in advance and an international student's Visa application is subsequently rejected by Australian Immigration, all tuition and resource fees will be refunded in full within 28 days upon receipt of a written notification from the Australian Embassy.
4. **If a student withdraws from their course for any reason, he/she will be entitled to a pro-rata refund as follows:**
 - If a student withdraws 28 days or more before course commencement date, 100% of tuition and resource fees will be refunded.
 - If a student withdraws less than 28 days before course commencement date 70% of tuition and resource fees will be refunded.
 - If a student withdraws within the first 28 days after course commencement date, 30% of tuition & resource fees will be refunded.
 - **No refunds** will be made after 28 days of course commencement date.
 - **No fees** will be refunded if a student is expelled by Cultural Immersion as a consequence of committing a criminal offence, or a serious breach of discipline, or breach of code of conduct or if they severely compromise others safety.
5. **Application fees, enrolment fees, bank & credit card fees and homestay placement fees are not refundable under any circumstances.**
6. **No refunds will be made once the student has completed 28 days of their studies,** unless the student has a legitimate complaint against the College that can be substantiated under the Consumer Protection Laws of the Commonwealth of Australia, or the State of South Australia.
7. If you cancel your homestay accommodation less than four weeks before your arrival you will be charged a cancellation fee of \$100 to cover administration costs. If you cancel your Homestay booking less than 48 hours to arrival you will be charged one week's accommodation fee.
8. All bank charges incurred by Cultural Immersion in issuing refunds will be met by the student & subtracted from the final refund amount.
9. Authorised refunds will incur a \$100 course cancellation fee which will be subtracted from the refund amount.

Requests For Refunds

1. It is the students responsibility to lodge a request for refund in writing. Requests for withdrawals must be made in writing on the **Refund Application Form**. Please contact Cultural Immersion for a copy of this form.
2. The date of withdrawal shall be the date that Cultural Immersion receives the refund application accompanied by the relevant supporting documentation.
3. Refunds will not be granted automatically - you will need to establish the cause of the withdrawal. Valid reasons for withdrawal are: i) Sickness (verified by a medical certificate); ii) Change of employment hours or location (verified by employer) or iii) Other reasons deemed valid at the discretion of Cultural Immersion.
4. Refunds will be processed and paid within 28 days of the receipt of the written notification and will be paid to the student named on the Course Application Form in Australian Dollars (AUD\$).
5. Refunds will be transacted by direct bank transfer or by cheque **not by cash**.

WORK PLACEMENTS AND WORKPLACE ASSESSMENT

Work Placement gives students the opportunity to develop practical job skills, such as interacting with people in a professional environment, developing communication skills, as well as an insight into particular job roles and responsibilities. Overall, students have found work placements enhanced their chances of getting a job and succeeding at it.

As a mandatory part of this course, students are required to attend a pre-arranged work placement. Cultural Immersion trainers or senior staff will assist students in arranging workplace placements. Workplace training and assessment is the gathering and evaluation of evidence during normal work activities in order to determine whether a required element within a competency has been achieved.

Workplace assessment is undertaken at work placements and will entail a combination of recognition, observation, questioning, discussion and third party validation. Placements must be unpaid work unless you are already employed in the industry.

All students must provide the relevant forms - completed and signed - before, during and after their work placement. Your trainer will go through the relevant forms with you. Workplace assessment is important to verify the successful demonstration of practical components of each required competency outcome. A qualified manager/supervisor from the work placement must sign the forms as validation.



Cultural Immersion

Level 7 East Wing, 50 Grenfell Street, Adelaide, South Australia, AUSTRALIA
Ph/Fax: (61 8) 8410 8938 Post: PO Box 3485, Rundle Mall, SA, 5000, AUSTRALIA
study@culturalimmersion.sa.edu.au www.culturalimmersion.sa.edu.au

Fashion & Photography Make-up (Certificate II in Make-up Services - WRB20204)



To gain competency you must complete a total of 15 units consisting of 13 core units and 2 elective units. International students cannot enrol to undertake partial course or individual units.

CAMPUS & DELIVERY MODES	
Campus:	Cultural Immersion at Level 7 East Wing, 50 Grenfell St, Adelaide, South Australia
Total Course:	370 hours
Weeks:	19 weeks
Days:	Mondays 9am to 4pm Tuesdays 9am to 4pm Work Placement / Study time 6hrs per week
Work Placement:	42 hours minimum
Start Date:	Contact Cultural Immersions Office
End Date:	Contact Cultural Immersions Office
Mode:	Classroom setting & workplace assessment. There will be an expectation that students will allocate a minimum of 6 hours per week for study or work placement.
No Class On:	Public Holidays

MAKE-UP KITS

Basic make-up/cosmetics supplies will be provided at the course. Students must purchase their own Make-up Kits that cost from \$600 & does not form part of course costs.

Kits can be purchased from Haircare Australia, Ph: 8403 8200. Your trainer can assist you in kit selection. The components & resources of the kits are the students responsibility. Students must bring their kits to all classes.

QUALIFICATIONS/CERTIFICATION

Successful completion provides you with the **Certificate II in Make-up Services**.

Students who successfully complete only one or more units within this Qualification will receive a Statement of Attainment.

SKILLS COVERED

You will learn technical make-up skills such as: designing and applying make-up for beauty, for photography, for weddings, to complement fashion, for certain skin conditions and camouflage and colour matching.

You will learn retail and business skills such as: good customer service, workplace communication, maximising sales technique, demonstrating retail skincare products, creating displays, merchandising, organising and maintaining work areas, working safely, practical application of product knowledge, conducting financial transactions, and practical skills on developing innovative ideas.

POTENTIAL EMPLOYMENT OPPORTUNITIES

Career opportunities include: make-up artist (in a beauty salon, in the media, a department store, freelancing or with a photographic studio); a retail cosmetic assistant; a beauty therapist (working in a beauty salon, managing a beauty salon or self employed).

Work opportunities also exist in merchandising; sales promotion; health retreats; spa therapy; cruise ships; in tourism and in fitness & lifestyle centres.

COURSE UNITS

UNIT CODE	CORE UNIT NAME
WRBCS201B	Conduct financial transactions
WRBCS202A	Apply techniques to update beauty industry knowledge
WRBCS203B	Provide service to clients
WRBFS201B	Demonstrate retail skin care products
WRBFS202B	Design and apply make-up
WRBFS203B	Design and apply make-up for photography
WRBFS204B	Design and apply remedial camouflage
SIRXCOM001A	Communicate in the workplace
SIRXIND001A	Work effectively in a retail environment
SIRXOHS001A	Apply safe working practices
WRRM1B	Merchandise products
SIRXCLM001A	Organise and maintain work areas
WRRS1B	Sell products and services
ELECTIVES	
SIRXMER005A	Create a display
SIRXQUA001A	Develop innovative ideas at work
WORK PLACEMENT	
42 hours minimum of workplace assessment/placement.	

MINIMUM ENTRY REQUIREMENTS

Any one of the following:

- Satisfactory completion of SACE Stage 1 (or equivalent) or
- Any Certificate I or
- 6 months full time equivalent work experience in any area.

English Proficiency Level Requirement:

- International Students or New Arrival Immigrants have an additional English Proficiency Level Requirement of: IELTS 5 or TOEFL (PBT) Score 510 or TOEFL (CBT) Score 180 or TOEFL (IBT) Score 64.

FOR ALL COURSE FEES AND COSTS PLEASE CONTACT US FOR A COURSE FEE SHEET

